



# C35

**EURO4**

# DFSK

*The spacious and solid solution for your business*



DK 1.5  
DVVT



Maximum Power: 100ps @ 6,000 rpm  
Maximum Torque: 136 N.m @ 4,000 rpm

*All Pictures shown are for illustration purpose only.*

# DONGFENG

**SUNWAY<sup>®</sup>**  
TRADING &  
MANUFACTURING

# TECHNICAL SPECIFICATION

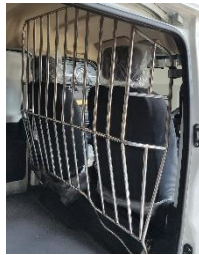
Model	Model Code		DXK5026XXYF
Parameter	Brand	DFSK	
	Body	Panel Van Double Sliding Doors	
Weight & Dimension	Seating Capacity	2 seats	
	GVW (Gross Vehicle Weight)	2100kg	
	Grade Ability	30%	
	Cab Width	1680mm	
	Wheel Base	3050mm	
	Carriage Inline Dimension (LxWxH)	2250 <sub>mm</sub> x1480 <sub>mm</sub> x1280 <sub>mm</sub>	
	Overall Dimension (LxWxH)	4500 <sub>mm</sub> x1680 <sub>mm</sub> x2000 <sub>mm</sub>	
	Curb Weight	1290kg	
	Maximum Speed	110km/H	
	Max. Turning Radius	10.5 m	
	Ground Clearance	190mm	
	Departure Angle	11°	
	Approach Angle	36°	
Pass Angle	21°		
Engine	Engine Model	DK 1.5 DVVT (Gasoline)	
	Rated Power	74 kW @ 6,000 rpm	
	Maximum Torque	136N·M @ 4,000 rpm	
	Emission Standards	Euro IV	
	Fuel Tank Capacity	55L	
	Transmission	5-Speed Manual	
Axle	Front Axle Load	940kg	
	Rear Axle Load	1205kg	

Chassis	Braking System	Front Disc, Rear Drum	
	Braking Mode	Hydraulic	
ABS (Antilock Braking System)	√		
Driving Type	Rear Wheel Drive		
Front Suspension	MacPherson independent		
Rear Suspension	5-Leaf Spring, Non-independent Suspension, With Stabilizer Bar		
Steering	Electric Power Steering		
Clutch Form	Mechanical		
External Configuration	Tyre	185/80R14	
	Rim	Silver steel wheels,	
	Wheel covers	Dongfeng logo	
	Wheel nuts	Galvanized nuts	
	Headlamp	Halogen	
	Front Door Window	Electric Power Window	
	Retroreflector	Independent	
	Foglamp	√	
	Rear Lamp	√	
	High Mount Stop Lamp	√	
Interior Configuration	Instrument Panel	Modern Meter Cluster	
	Audio System	AM/FM Radio	
	Aircon	Manual Single Zone	
	Seat Belts	3-point	
	Horn	Tone Horn	



### PVC FLOOR

Durable and convenient for loading and unloading goods



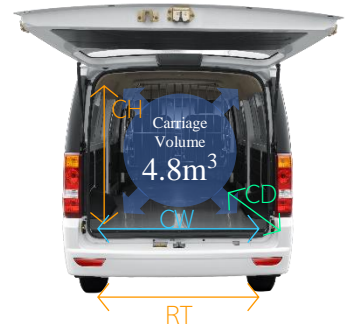
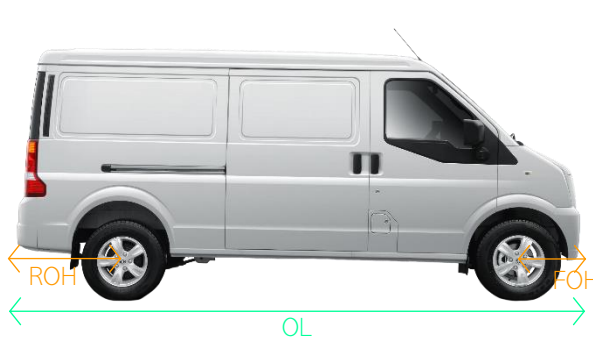
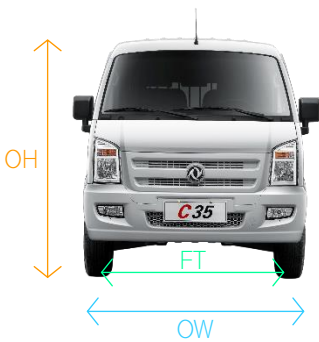
### Stainless Steel Fence

The fence has a curved shape that allows for adequate cargo space and maximum driving space while keeping the cargo safe.



### Ergonomic Design Layout

Sedan Instrument Panel: substantial, concise and elegant.  
Accessible Operation: enable good hand-eye coordination.



### Chassis Dimension (mm)

Overall Length (OL)	4,500	Wheelbase (WB)	3,050	Front Tread (FT)	1,435
Overall Width (OW)	1,680	Front Over Hang (FOH)	570	Rear Tread (RT)	1,435
Overall Height (OH)	2,000	Rear Over Hang (ROH)	880		

### Carriage Dimension (mm)

Carriage Width (CW)	1,480
Carriage Height (CH)	1,280
Carriage Deep (CD)	2,550

Disclaimer: The Manufacturer reserves the right to make changes to technical parameters & designs or to discontinue models without prior notice.

## DONGFENG COMMERCIAL VEHICLE (MALAYSIA) SND BHD

Lot 526, Persiaran Subang Permai, Sungai Penaga Industrial Park, USJ 1, 47600 Subang Jaya, Selangor Darul Ehsan.

Tel: 03-8021 9068 Fax: 03-8021 9069

Website: <http://dongfeng.my/>

Authorised Dealership



**DONGFENG**

© Version 09/2022